



Casa Cabrero

Puerta del
Hierro II

Madrid - 1961

Fig.1

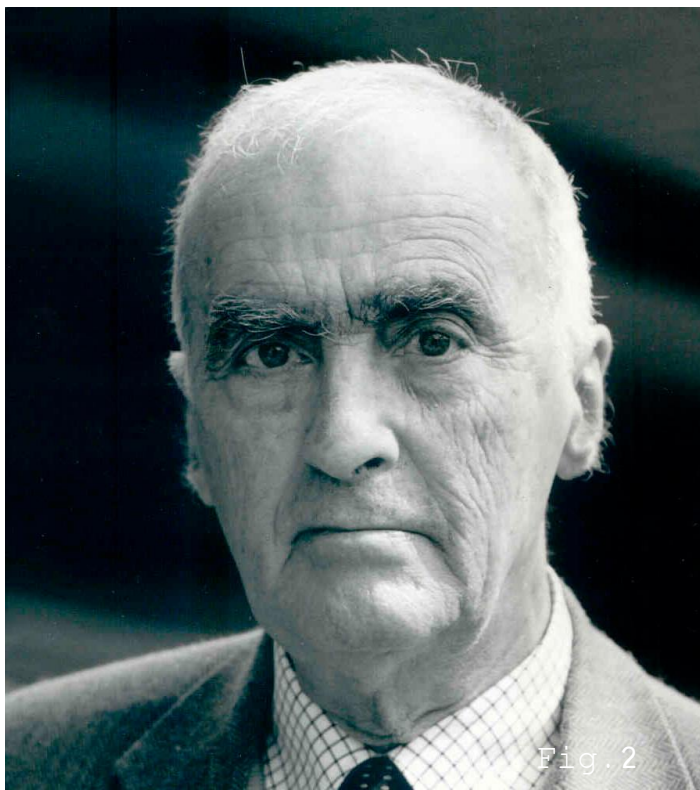


Fig. 2

Francisco de Asís
Cabrero Torres-Quevedo

1912 - 2005



Fig. 3: Mausoleo del Qaide Azam Mohamed Ali Jinna Karachi



Fig. 4: San Petersburgo

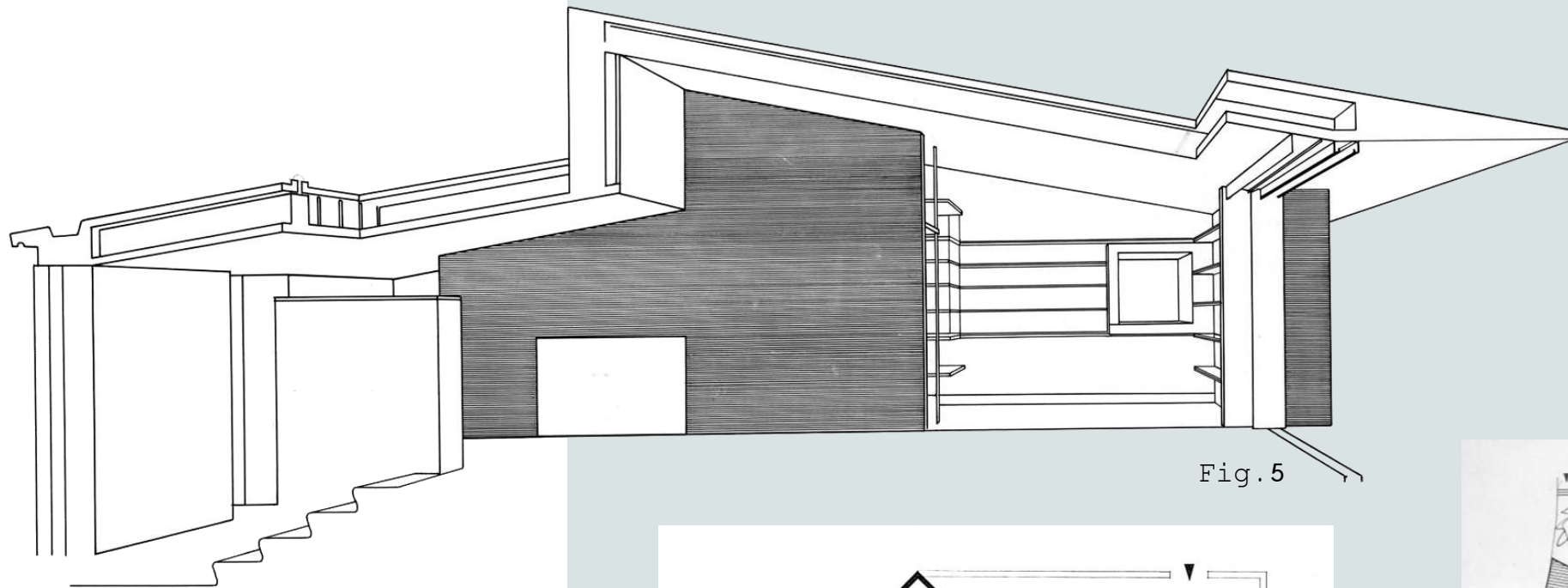


Fig.5

Casa Cabrero I

Puerta de Hierro de
Madrid, de 1952

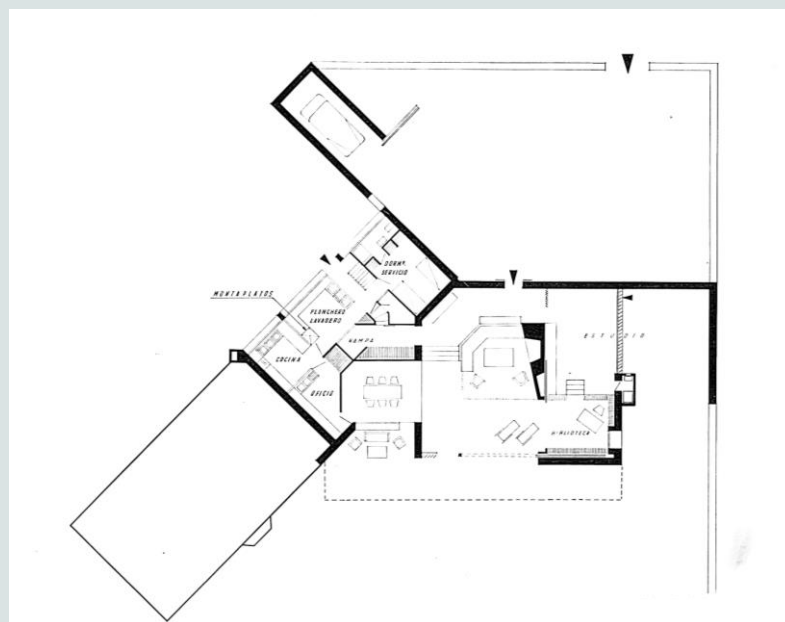


Fig.6



Fig.7



Otras obras:

Viviendas Virgen del Pilar,
1948



Fig.1

Fig.8



Otras obras:

Sindicatos de Madrid,

1951



Fig. 9



Otras obras:

Edificio de Arriba,

1962

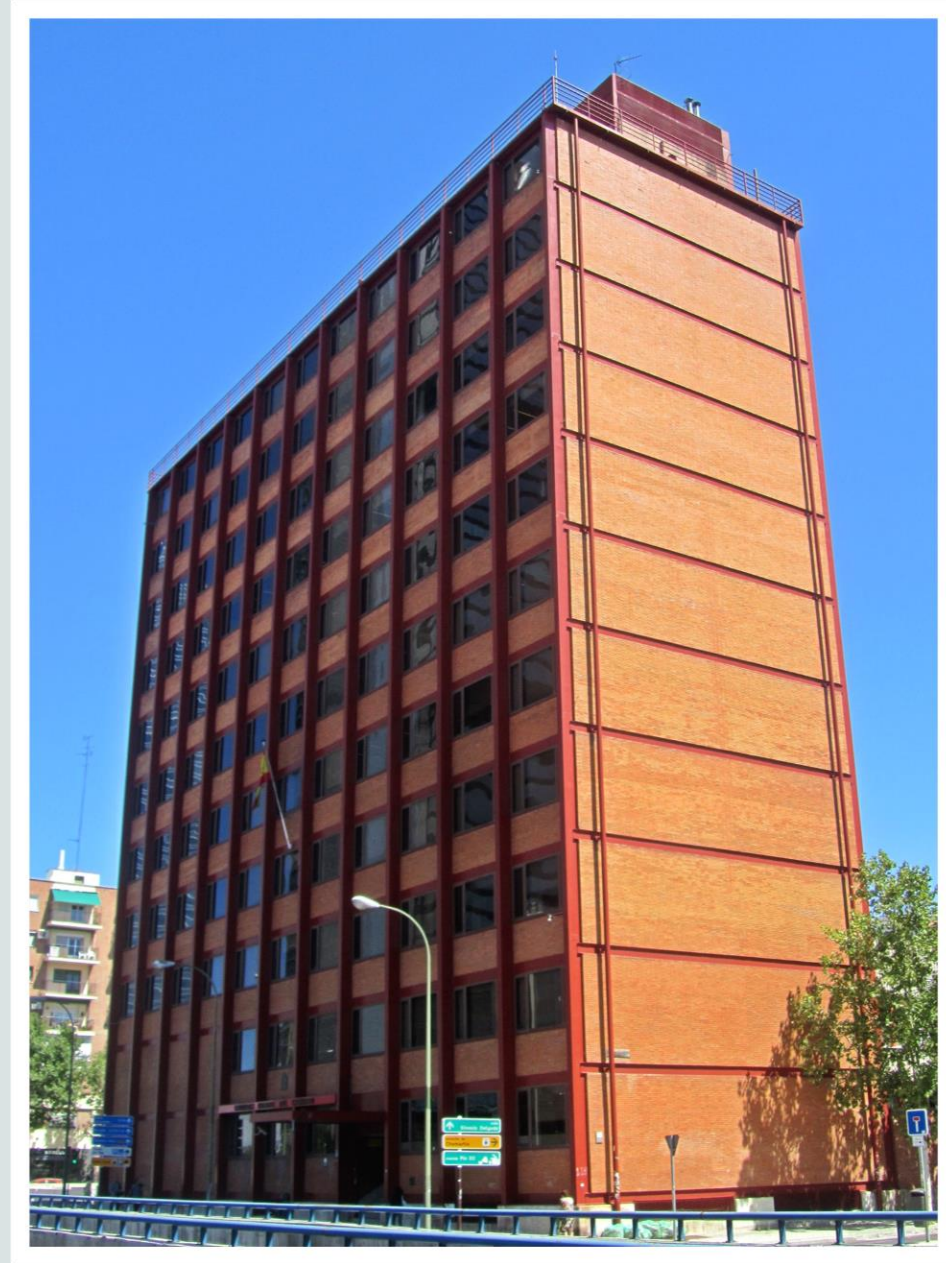


Fig.10



Fig. 11



Fig. 12

Viajes:



Fig. 13



Fig 14: S.R Crown Hall - 1956
Mies Van Der Rohe



Fig 15: Italia - 1941



Fig. 16

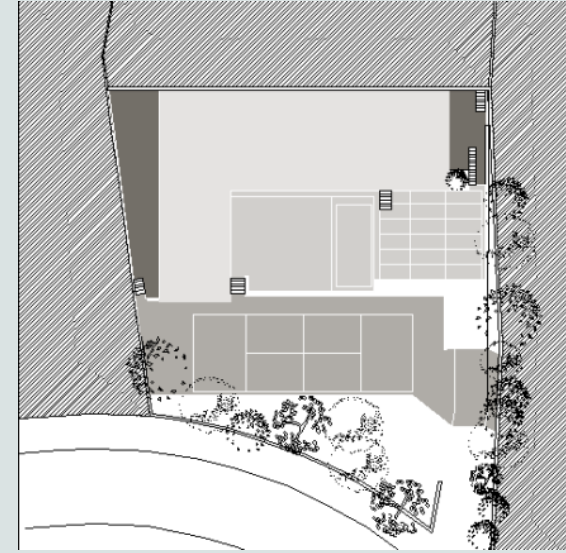


Fig. 17

Casa Cabrero II

Puerta de Hierro de
Madrid, de 1961

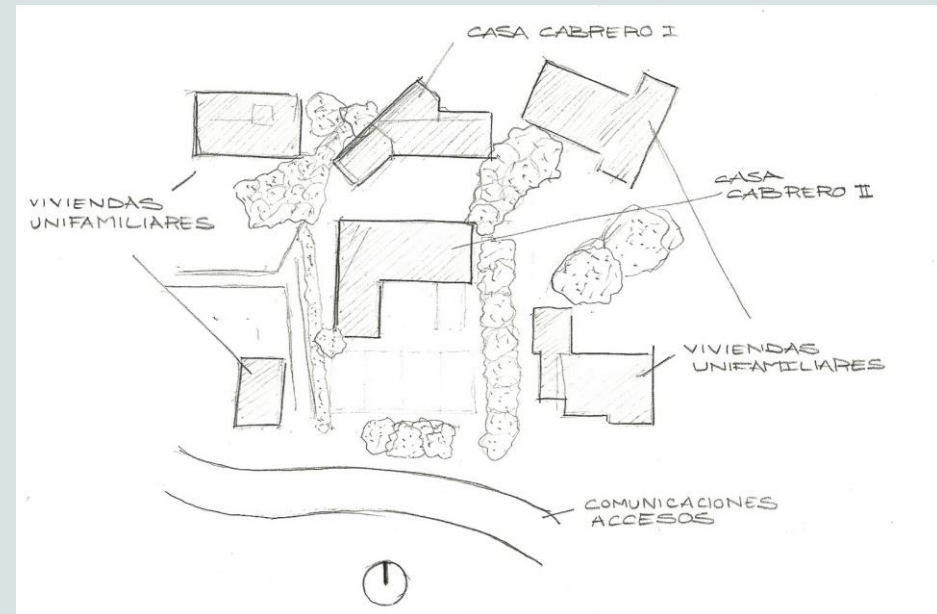


Fig. 18



Fig.19

Casa Cabrero II

Programa y Forma

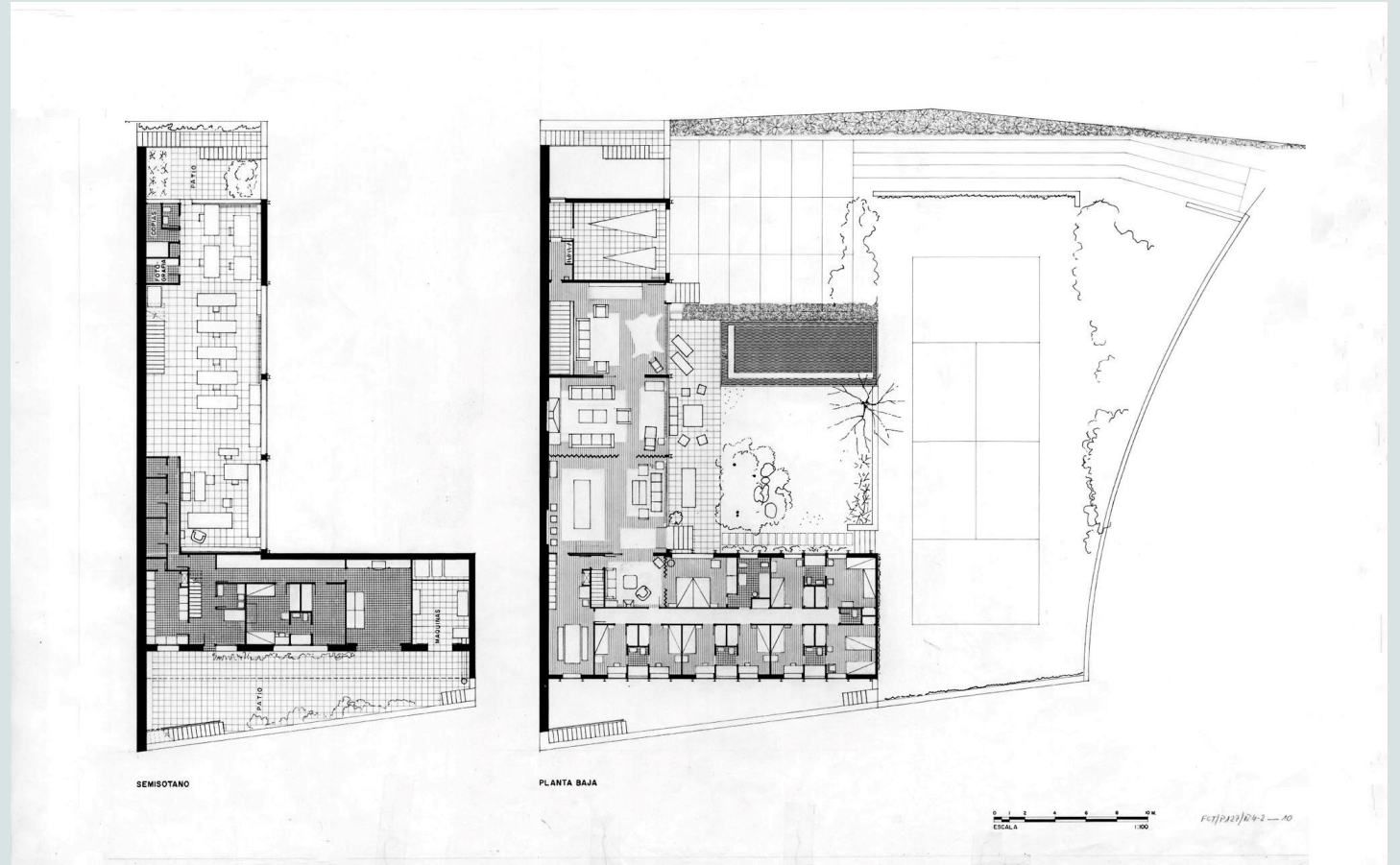


Fig.20



Fig.21

Casa Cabrero II

Alzados y secciones

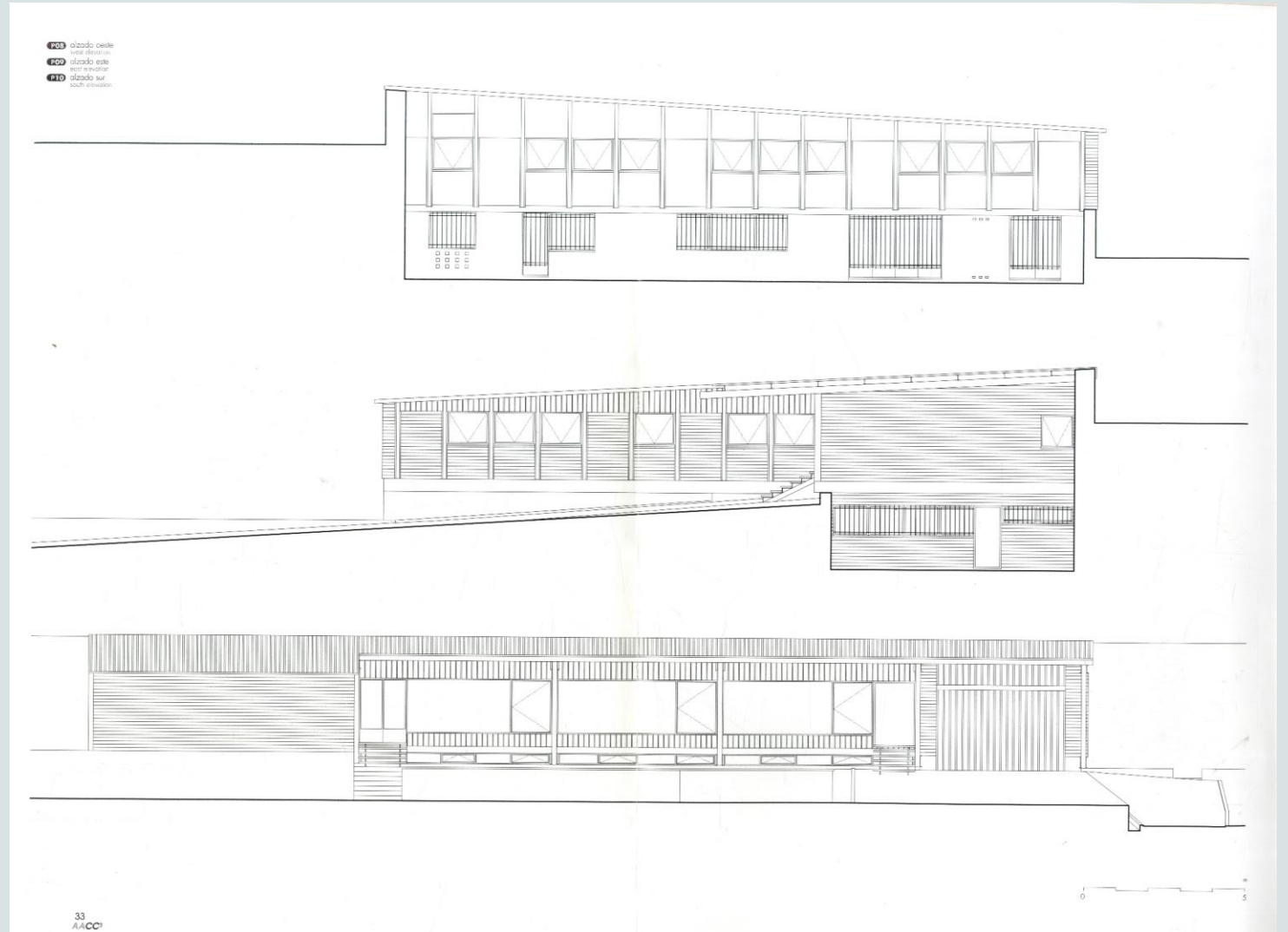


Fig.22

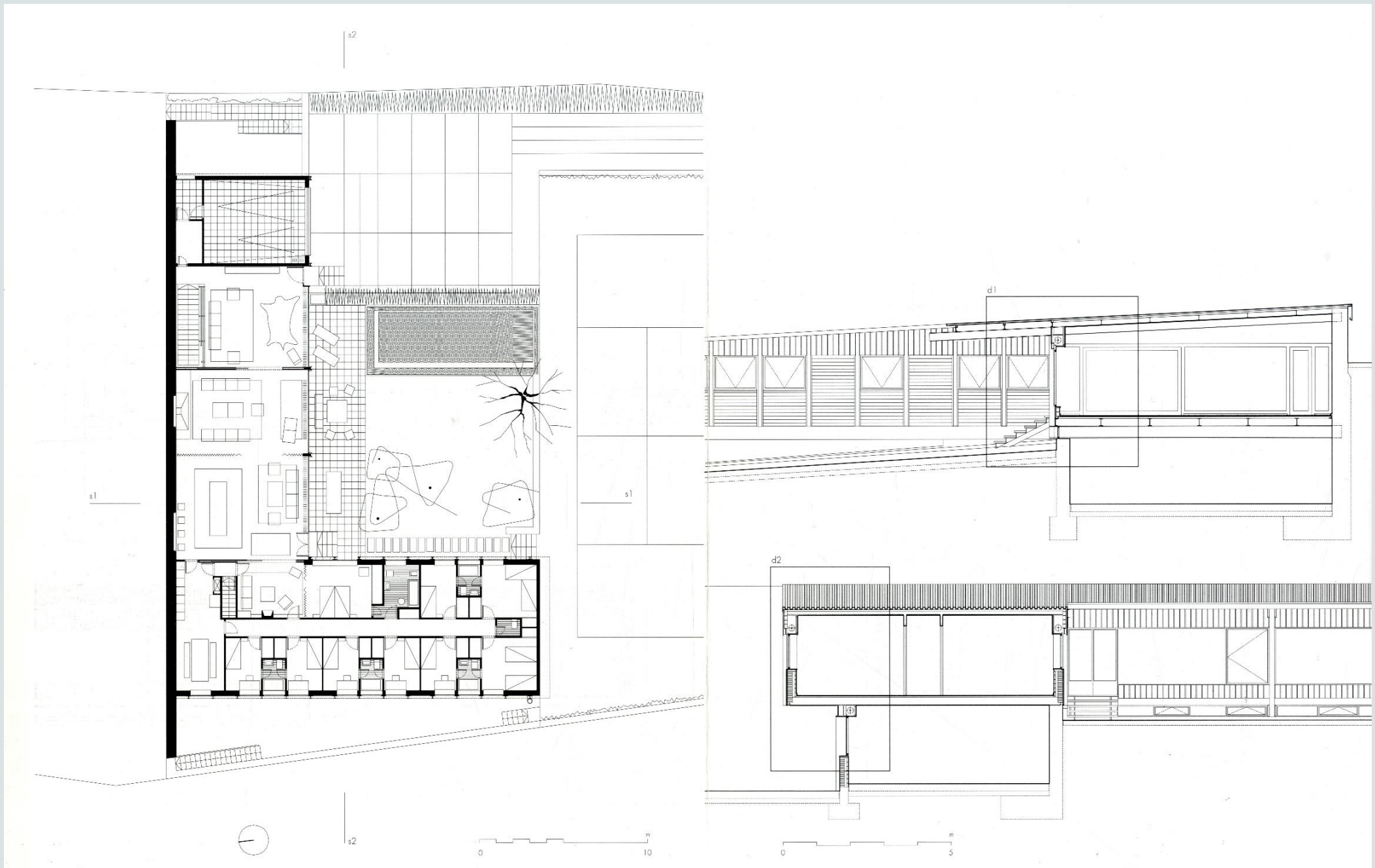


Fig.23



Fig.24

Casa Cabrero II

Distribución y Función



Fig.25



Fig. 26



Fig. 27



Fig.28

Casa Cabrero II

Materialidad



Fig.29



Fig.30

Casa Cabrero II

Luz

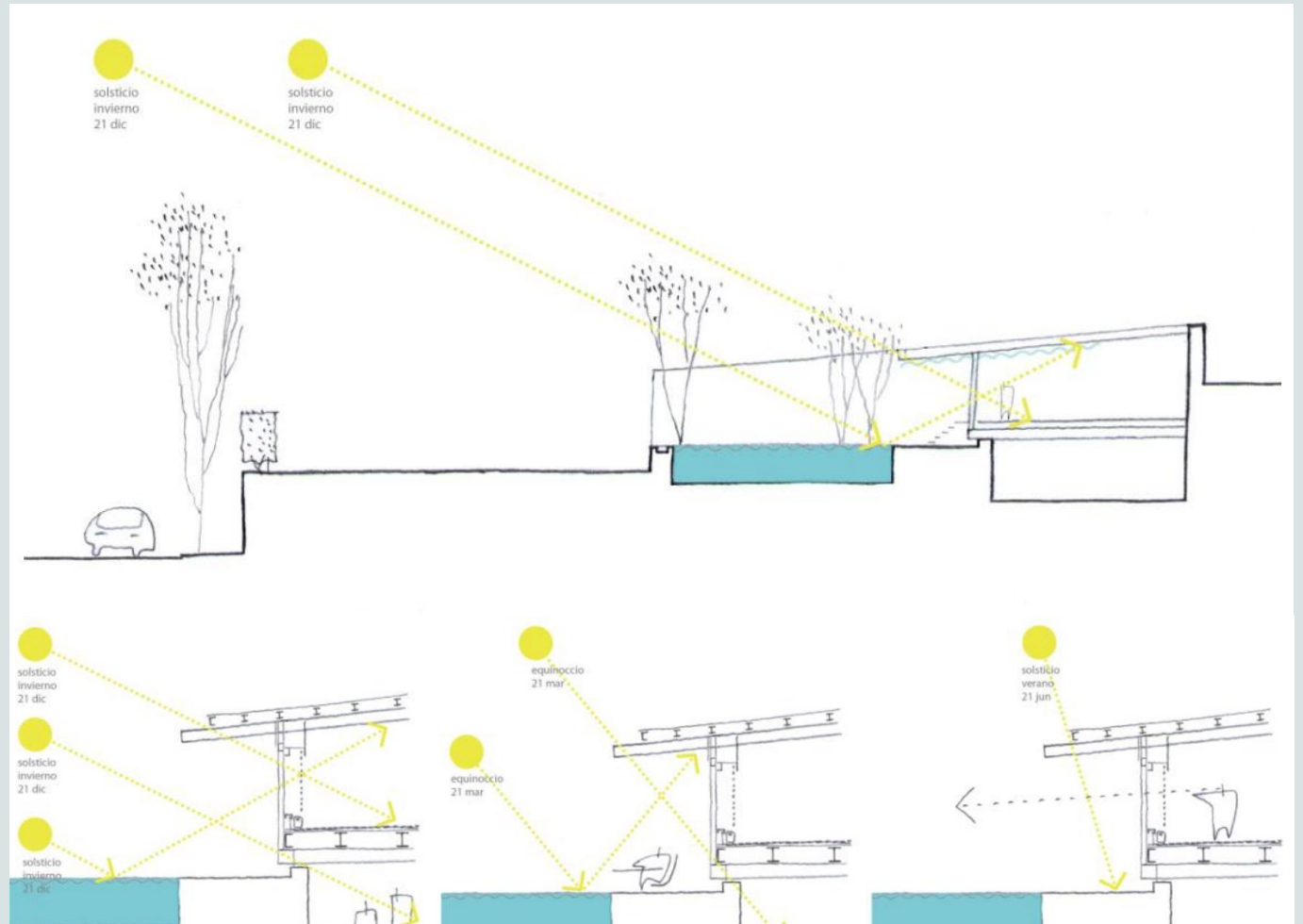


Fig.31



Fig. 32

Casa Cabrero II

Luz

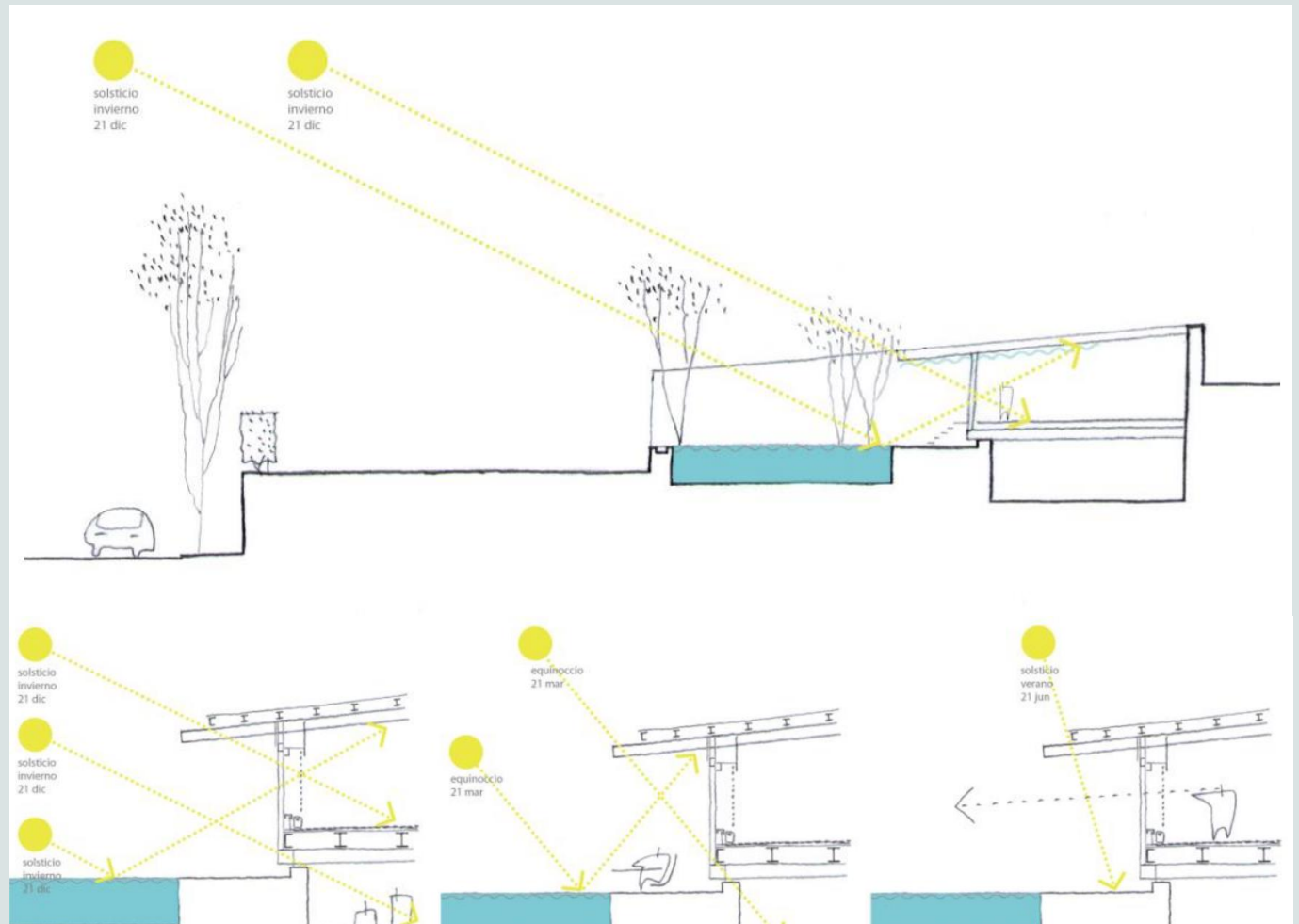


Fig. 33



Fig.34

Casa Cabrero II

Estructura

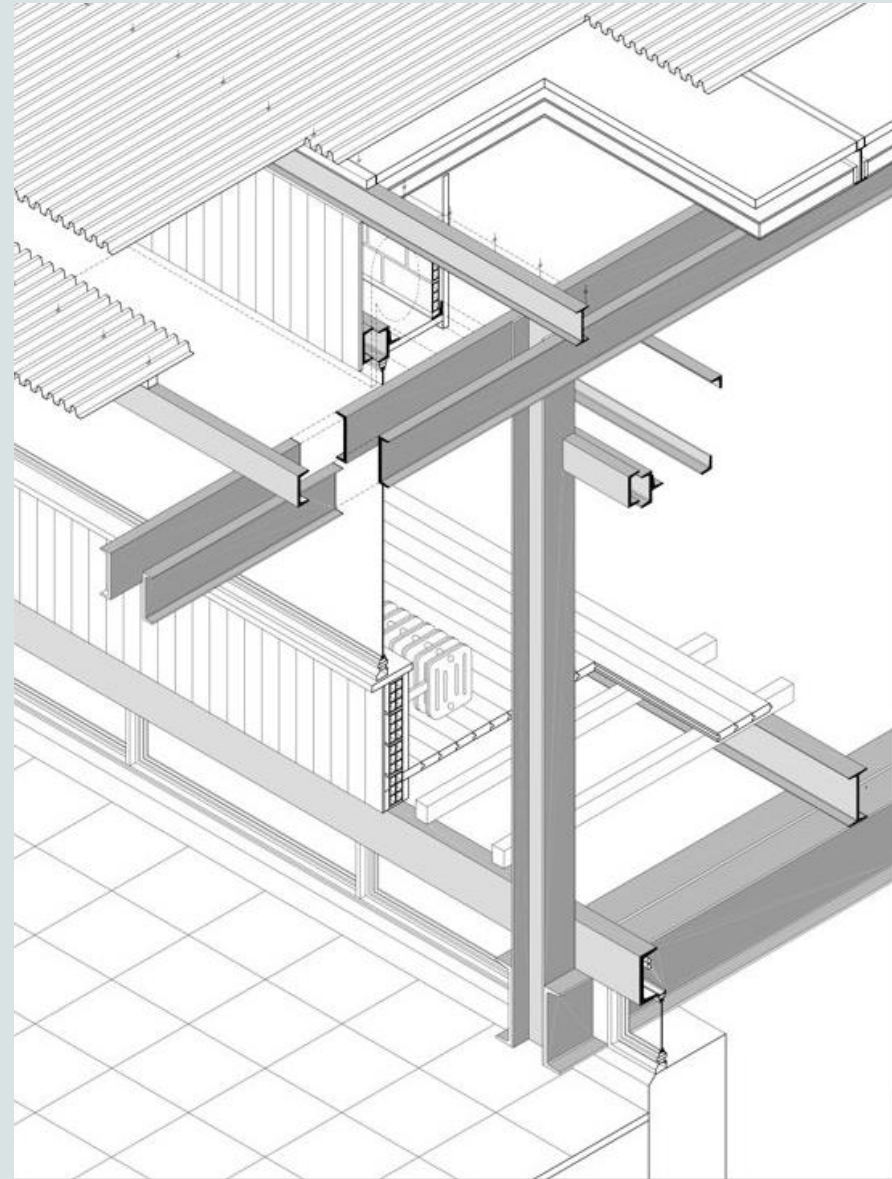


Fig.35

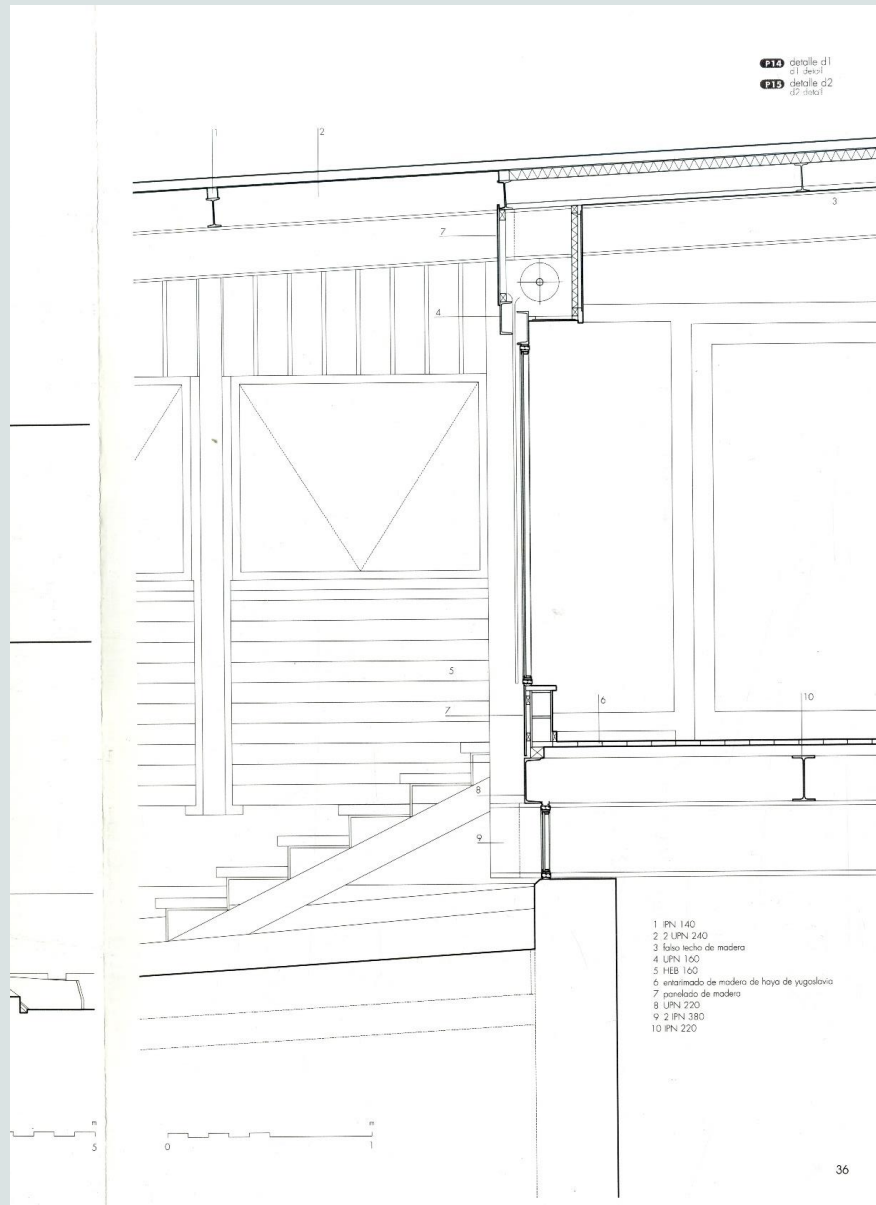


Fig. 36

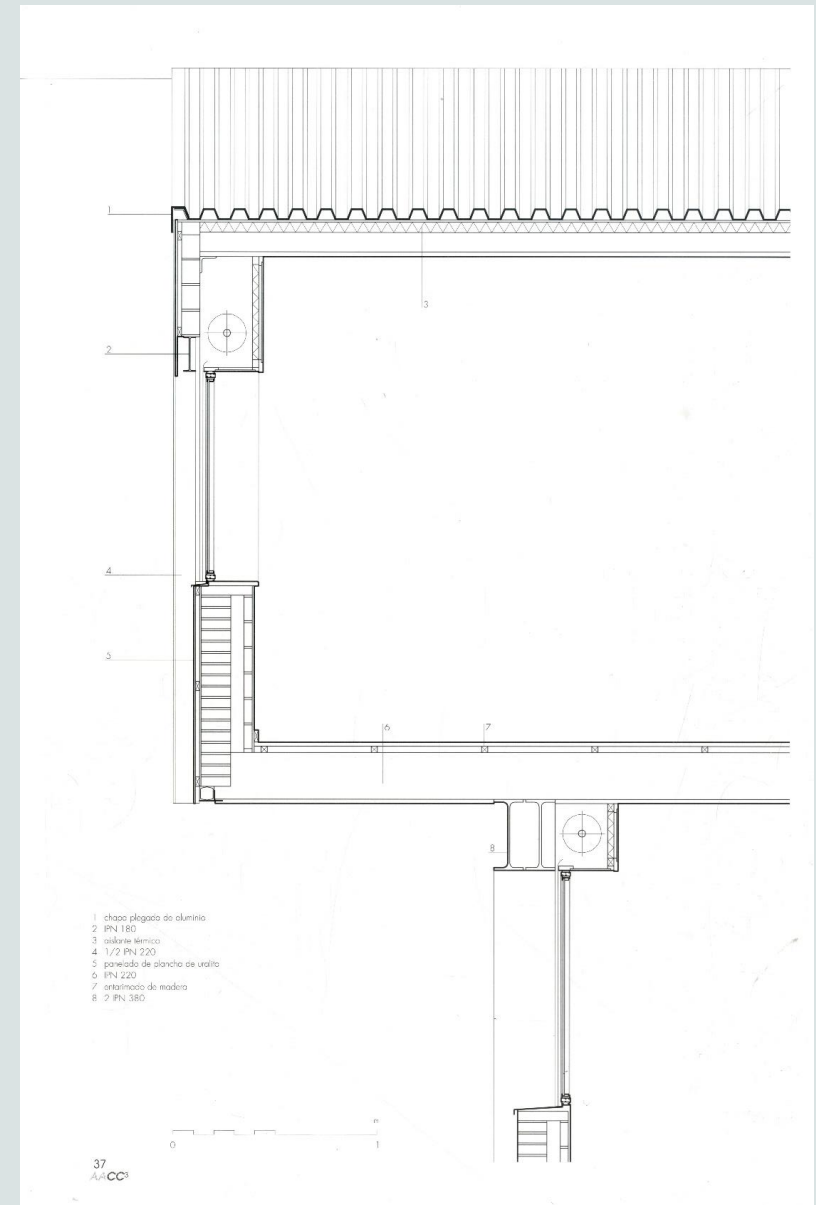


Fig. 37

